

CASHIDO

User Manual

10 Second Machine

OH6800 - X series



台灣精品 2012
TAIWAN EXCELLENCE

10秒機

超氧離子殺菌裝置 安裝使用手冊

Ozonized Water



Ozonized Water

Ozone-Water OH6800-x Cleaner User's Manual

10 SECOND MACHINE

Items b - d XA2 models not applicable

a. 10 Second Machine



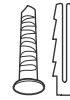
b. Adaptor/
Ozone Mixer



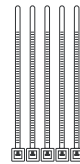
c. Silica Tube



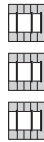
d. Screw and
Plastic
Screw Holder



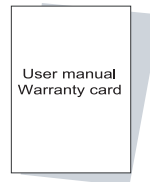
e. Cable Tie



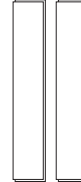
f. Wire Mount



g. User Manual /
Warranty Card



h. Velcro



i. AC Adaptor



j. Filter



Model:	OH-6800-X Series
Color:	White
Input voltage:	DC 12V \ominus \oplus
Power consumption:	4.5W(max)
Dimensions:	189(L) x 125(W) x 46(H) mm
Gross weight:	376g±10%
Ozone output:	150mg/hr
Protective device:	10 minutes auto cut-off protection

Please read warnings on page 8 before installation and use.

10 Second Machine

INSTALLATION AND OPERATION INSTRUCTIONS


● Installation method and procedure

1. Check to see that the machine is free from defects. Also make sure that the device has not suffered any shipping and handling damages.
2. Please check if any parts are missing, and make sure the following accessories are included:
 - a. 10 Second Machine
 - b. Adaptor / Ozone Mixer (XW2 applicable)
 - c. Silica Tube (XW2 applicable)
 - d. Screw and Plastic Screw Holder (XW2 applicable)
 - e. Cable Tie
 - f. Wire Mount
 - g. User Manual / Warranty Card
 - h. Velcro
 - i. AC Adaptor
 - j. Filter
3. Please refer to the illustration on the page 4 for installation instructions.

● Components



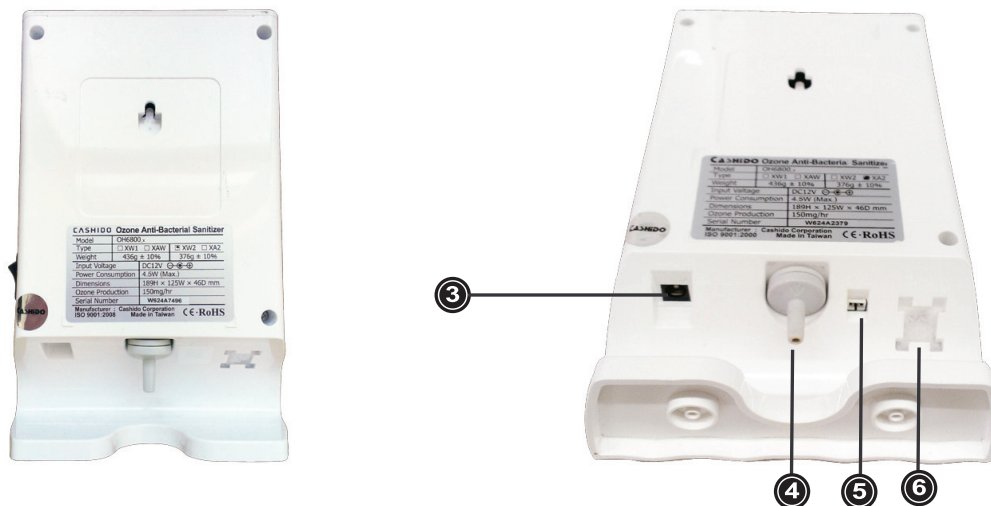
#	Item	Explanation
1	Status indicator	When the indicator LED light is red, the machine is in standby mode. When the indicator LED lights is blue, the machine is operating.
2	POWER button	On/Off Power and function option



- Indicates ozone is being generated
- Indicates power is off

10 Second Machine

● Identifying components



#	Item	Explanation
3	DC 12V Input Jack	To plug in the DC12V cord.
4	Ozone Output Pipe	To connect the silica tube
5	LED Plug (XA2)"	To connect the LED line
6	Filter	To change the filter when necessary

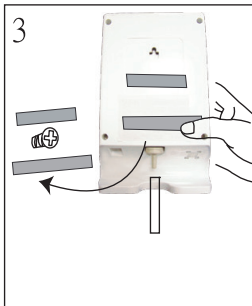
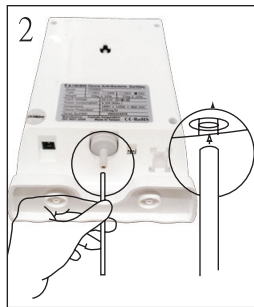
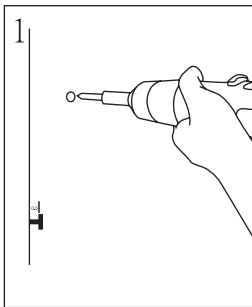
● Warranty is valid for one (1) year from the date of purchase.

● Note: The warranty does not cover any of the following:

- Damage due to natural disaster, accidental damage, replacement and incorrect handling.
- Damage caused by unauthorized repairs.
- Damage to the machine caused by non original manufacturer parts.

10 Second Machine

Installation Directions - XW2 Models

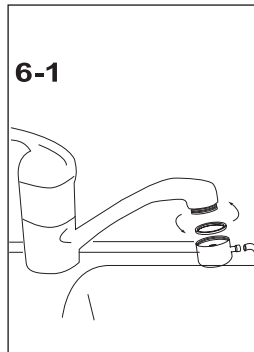
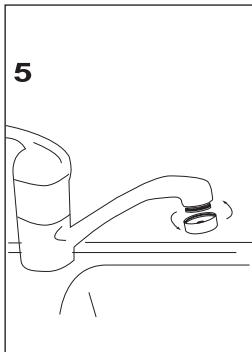


- 1** Hammer a plastic screw holder into the wall. Fasten a screw into the plastic screw holder, keeping a distance of about 3/16"~ 6/16" between the head of the screw and wall. (If you wish to use Velcro on the wall, be sure to clean the tile first.)
 - CAUTION: The machine should hang 6" above the tap. Velcro can only be put on tile or a smooth surface.

- 2** Connect the silica tube to the ozone output pipe. The pipe is located on the back bottom side.

- 3** Hang the ozone sanitizer on the wall. (Apply the Velcro horizontally, in order to connect both wall and the backside of the machine.)

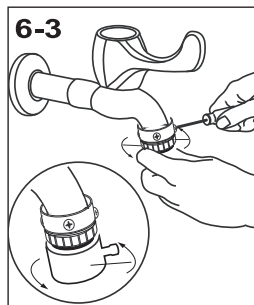
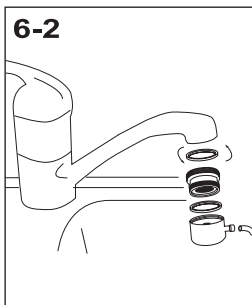
- 4** Adjust the position of the ozone sanitizer so that it is upright on the wall and level. (If the Velcro is on the wall, make sure the machine sticks to the corresponding tape) (Instead of using screws and Velcro, one can also stand the machine on a flat surface beside faucet.)



- 5** Take the original aerator off the faucet.

- 6-1** If the faucet spout is male, please attach the ozone mixer directly to the faucet and insert silica tube.

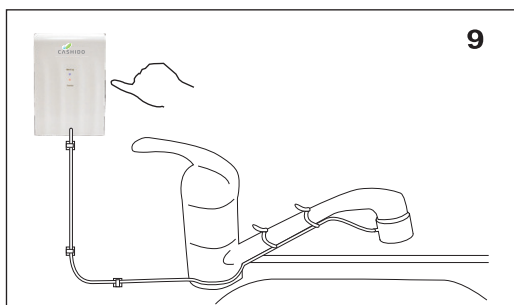
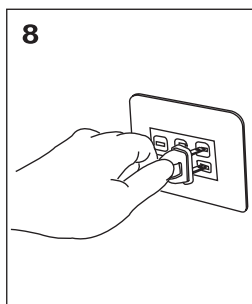
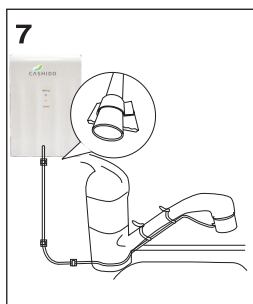
- 6-2** If the faucet spout is female, please connect the included adapter and then attach the ozone mixer to the faucet. Once completed, the silica tube can be connected.



- 6-3** If there is no aerator on the faucet, the traditional adaptor attached is needed. Install the traditional faucet adaptor and tighten the ozone mixer to it.

■ CAUTION: Do not apply direct force to the mixer plug.

10 Second Machine



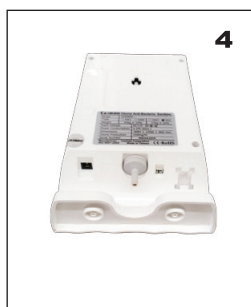
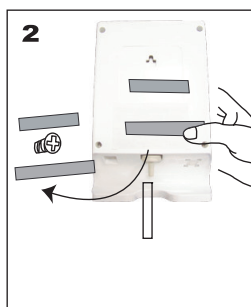
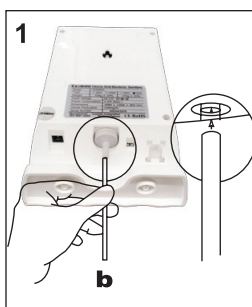
7 Connect the silica tube from the ozone sanitizer pipe to the aerator. Use the cable ties to secure the silica tube. To the faucet use the wire mounts to secure the silica tube to the wall

■ CAUTION: Do not press or squeeze on the silica tube.

8 Plug the AC adapter into the ozone sanitizer and the power outlet.

9 Press the power button on side of the machine. If the red light indicator is on firmly, then installation is complete.

■ Illustration For Installation - XA2 Models



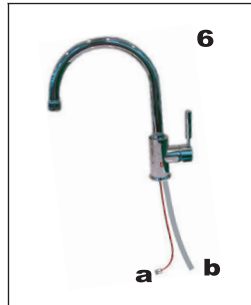
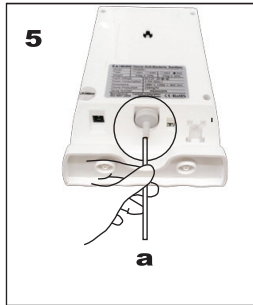
1 Connect the silica tube to the portal of the ozone sanitizer. The portal is located on the back bottom side.

2 Hang the ozone sanitizer on the wall inside a cupboard. (Please apply the Velcro horizontally, in order to connect both wall and the backside of the machine.)

3 Adjust the position of the ozone sanitizer so that it is upright on the wall and level. (If the Velcro is on the wall, make sure the machine sticks to the corresponding tape.)

4 Instead of using screws and Velcro, one can also stand the machine on a flat surface beside the faucet.

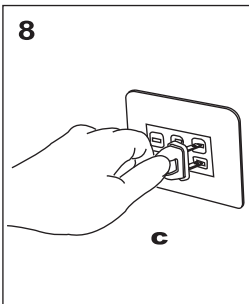
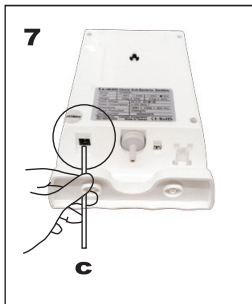
10 Second Machine



5 Connect LED line "a" as in picture 6

6-1
Connect the silica tube from the sanitizer to "b" as in picture 6

6-2
For faucet head installation please refer to the faucet manual.



7&8
Plug the AC adapter into the ozone sanitizer at "c" and plug the other end into your power outlet.

9
Press the power button on the side of the machine.
If the red light indicator is on firmly, then installation is complete.



10 Second Machine

Illustration - Turn On / Standby / Activation / Turn Off Mode **XW2 / XA2 applicable**



Turn On / Standby:

Switch the power button on the machine side to the "I" position to turn on the machine. Once turned on, the machine and faucet lights will turn red, showing the machine is in standby mode.

Activation:

When the tap is turned on, the blue light on the machine and green light on the faucet will turn on, and the machine will be activated to produce ozone.

Turn Off:

Switch the power button to the "O" position to turn off the machine. The indicator light will then turn off.

Auto-cut-off Protection:


Auto-cut-off protection will activate once the machine has been running continuously for over 10 minutes.

(When auto-cut-off protection activates, the red light on the machine and faucet will begin to blink and ozone generation will stop for safety. If the user wishes to use it again simply turn off and turn on the water.)

10 Second Machine

Warning

- Read instructions carefully, and follow all warnings and instructions.
- Please remember the following warning signs, and follow all instructions for your own safety.

 May lead to serious accidents when not operated properly.

 May lead to bodily injury or property damage when not operated properly.


■ Meanings of the following signs

 Do not !


 Please follow instructions.


 Unplug the power cord.

Warning

 Do not transform, open or repair the product by yourself.


 Do not touch the machine with wet hands.


 Do not damage, twist, or pull on the power cord.


 Do not allow anything to rest on the power cord.


 Please turn off and unplug the product while maintaining or moving it.

 Do not use the product when the power cord or plug is damaged or frayed.

 Do not use the product in enclosed spaces or overly humid environments.

 Do not drink ozonized non-potable water directly.

 Do not place in direct sunlight.

 Do not place near a heater, or other such devices.

The machine can only be operated within the temperature range, 32-122 F.


 Do not use flammable items near the device (ex. Aerosol cans, smoke, etc)

 Do not block air holes.

 Do not immerse into water. In case of water damage, discontinue using the device.

 Do not use liquid cleaners or aerosol cleaners to clean the machine.

 Please unplug the power cord when the device is not in use.

 Please place on solid wall or pillar to prevent falling down and causing damage.

10 Second Machine

■ 10 Second Machine Mermaido Showerhead Set Installation Guide

Thank you for purchasing the 10 Second Machine Mermaido Showerhead Set and bringing the bacteria-killing power of ozone to your showerhead. Please read all directions before installation.

1. The is meant to be installed in a well-ventilated area.

Please allow for maximum air flow in all areas this product is used.

2. The is meant to be used in conjunction with the Showerhead Attachment.

Please note:

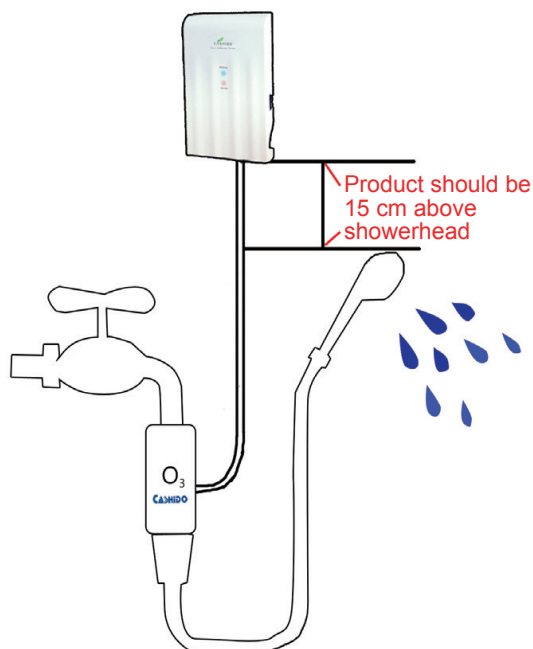
A. The should be installed 180 cm above the ground, preferably near the ceiling.

B. This product should be installed at least 15 cm above the showerhead.

C. Do not bend, twist or compress the showerhead tube as this may cause water to backflow, enter the machine and may damage the machine.

D. After finishing a shower, lower the showerhead to below the tub filler, turn off the water and allow residual water to leave the tube before hanging it.

E. Please refer to the following illustration:

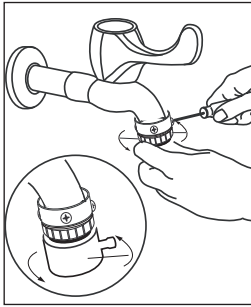


3. The product shell is water resistant. Do not cover the product, as this may block airways and create excess humidity.

10 Second Machine

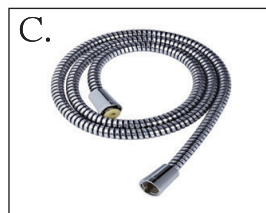
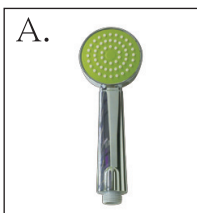
■ Accessories – Installation and use of the accessories

1. Traditional Adapter

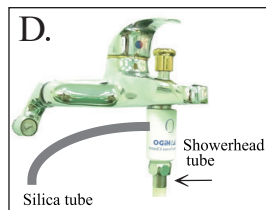


- When to use it:
When installing the mixer on a traditional faucet without threads.
- Directions:
Secure the traditional adapter to the faucet, then screw the mixer on to the traditional adapter.

2. Showerhead (Fig. A) and showerhead mixer (Fig. B)



- When to use it:
When installing the ozone sanitizer on a tub spout. Install the specially-designed Cashido showerhead (Fig. A) and the showerhead mixer (Fig. B).



- Directions (Fig. D)
Connect the showerhead mixer to the tube spout, then connect the showerhead tube to the bottom of the mixer. Plug the silica tube into the side of the mixer.

3. Diverter



- When to use it:
When using the ozone sanitizer in conjunction with a water filtration system.
- Directions
Connect the diverter to the end of the faucet, then plug the water filtration system tube into the side of the diverter.

Please contact Cashido to purchase these accessories.

10 Second Machine

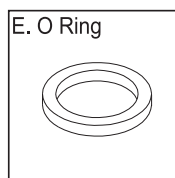
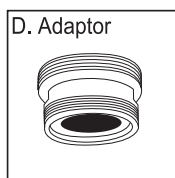
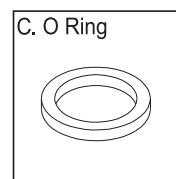
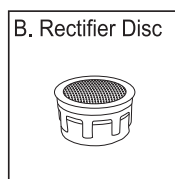
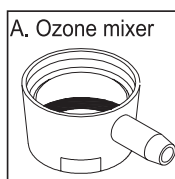
Maintenance

1. Use a clean cloth to clean the surface of the device and to remove dust from the outlet.
2. Replace the filter in the back side of the machine on a yearly basis.
Replace the filter when it is dirty or broken in order to prevent malfunction of the ozone water cleaner.

XW2 Models

3. Ozone mixer needs to be cleaned on a monthly basis in order to prevent water outlet blockage.

Please follow the following procedure to assemble ozone mixer components from A to E,



Troubleshooting

Item	Problem	Reason	Solution
1	Leaking water or unable to release ozone	Ozone mixer improperly installed Mixer improperly assembled	Reinstall
2	Diminished water flow, water backflow	Mixer filter blocked	Reinstall
3	Unable to turn on or unable to operate	Machine may be damaged or got wet	Return to vender
4	Sensor breaks or reduced sensitivity	Overly humid	Return to vender
5	Buzzing sound	Possible misuse or unable to turn off	Return to vender
6	Other behavior		Return to vender

10 Second Machine

Ozonized Water Q&A

What is ozone?

Ozone is formulated by three oxygen atoms. Ozone (O₃) is a gas that has low density, and is colorless under normal temperature. If the density reaches a specific level, it will have a grass-like smell and will become a pale blue color. Clean air is always very refreshing, especially after heavy thunder and rain, this is in fact the smell of ozone. You can smell the same air when you are in a forest, under rainfall, around the ocean or even near a river.

O₃ Ozone Features

1. O₃ is toxic-free and colorless, with a fresh grass smell.
2. O₃ has one more nascent oxygen(O), contrast to Oxygent(O₂). It's oxidizing force is 3000 times that of chlorine.
3. O₃ has an ultra-strong oxidizing force. It can instantly react with bacteria, noxious substances or odors, and effectively deodorize, sterilize, detoxify, and bleach.
4. O₃ sterilization occurs by destroying the cell membrane and structure through decomposition and oxidization.
5. When the ozonized water is used to wash food and materials, it will destroy pesticides through oxidization.

O₃ Ozone Functions

Sterilizing, Detoxifying, Deodorizing, Bleaching, Freshening

10 Second Machine Applications

1. Sterilization – Eradicates bacteria and viruses effectively, such as E. Coli, Golden Staphylococcus, Salmonella, etc.
2. Keeps vegetables and fruits toxic-free – Breaks bonds instantly to decompose chemical remnants, poisonous agrochemicals, heavy metals, and fertilizers turning them into CO₂, H₂O and other such harmless and stable substances.
3. Water treatment – Reduces the by-product THM created when disinfecting with Chlorine. Also oxygenate nonorganic dissolved substances such as iron and magnesium as well as organic pollutants and bad flavors.
4. Deodorization – Remove foul odors from seafood and mildew.
5. Preserving fish – Extend the lifespan of fresh fish.
6. Bleaching – Can be used as a bleaching agent to wash clothes, carpet and mildew.
7. Therapeutic bathing – Your body can absorb ozone to release pressure and improve metabolism
8. Facial and skin treatment – Prevent pimples, clean cuticles, and dissolve dirt.
9. Oral cavity cleaning – Oxidize dissolved sulfides and help to prevent periodontal diseases
10. Disinfect kitchenware, cookware, and chopping boards.
11. Personal hygiene – Deodorize and disinfect.
12. Health and body – Maintain oral hygiene, prevent tooth decay and treat athletes foot.

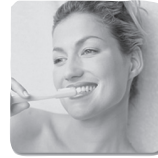
10 Second Machine

■ Applicable Locations

Home, bathroom, office, beauty salon, restaurant, cafeteria, fast food restaurant, hospital, clinic, school, nursery, motel, department store, hotel, supermarket, play ground, cold storage, gym, shopping mall, public lavatory, pet shop etc.

■ Ozonized water benefits

1. Hospital, and Home Hygiene
Benefits: Sterilization for clothes, and utensils.
Prevents medical equipment from cross-contamination.
2. Health, Beauty Salon, Skin Care, SPA
Benefits: Facial treatment, keep skin from aging.
3. Agriculture, Aquatic Products, Fish Hatchery
Benefits: Aquatics breeding, storage, processing, seed breeding, cleaning.
4. Fresh Food, Fruits, Vegetables and Meats
Benefits: Sterilize and preserve fish, shrimp, shellfish, sashimi as well as fruits and vegetables.
5. Swimming Pool, Purify Water
Benefits: Deodorize, sterilize, water treatment.
6. Restaurant, Fast Food, Cafeteria, Work Sites
Benefits: Clean cutting boards, bowls, plates, baskets, even tables and chairs in shopping malls. Maintains a clean environment without an offensive smell.



■ O₃ Ozone Instant Sterilization Test.

■ Kill 99.99% of salmonellosis in 10 sec. (Tested by Food Industry and Development Institute)

■ Kill 99.99% of colon bacillus in 10 sec. (Tested by Food Industry and Development Institute)



■ Kill 99.99% of staphylococcus aureus in 10 sec. (Tested by Food Industry and Development Institute)



■ Kill 99.99% of klebsellia pneumoniae in 10 sec. (Tested by Food Industry and Development Institute)

■ Kill 99.99% of pseudomonas aeruginosa in 10 sec. (Tested by Food Industry and Development Institute)

10 Second Machine

■ Applications of O3 Ozonized Water in Daily Life

Application	Benefits
Disinfection by hand-washing	Kill bacteria quickly.
Remove insecticides left on vegetables and fruit.	Dissolve insecticides and parasite ovum. Disinfect bacteria and retain the freshness of fruits and vegetables, which will make them more delicious.
Household water treatment	Kill bacteria, deodorization, and remove pigments. Decreases organic halides in the water.
Kitchen cleaning	Disinfect, eradicate chemical remnants, no secondary pollution for the environment.
Clean clothes	Ozonized water cleans dirt and bacteria in fibers. Other benefits: bleaching, deodorization.
Wash fresh meat and seafood	Maintains freshness and eradicates bacteria on food.
Oral hygiene	Disinfect teeth, gums and tongue. Prevents gingivitis and halitosis.
Facial treatment	Disinfect, clean cuticles, dissolve dirt and rejuvenate your skin, improve metabolism.
Athletes foot	Eradicate mildew, bad smells and athletes foot.
Personal hygiene	Deodorize and prevent bacteria buildup.
Bathing, SPA	Ozone SPA, maximize oxygen and improve metabolism.

For more information, please visit the Cashido website:
www.cashido.com.tw

Ozonized Water

OH-6800 X系列 使用手冊

科技/健康/環保/超氧離子殺菌裝置

10秒機

b - d 項 XA2型號不適用

a. 10秒機



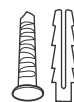
b. 轉接接頭/
超氧離子混合器



c. 矽膠管



d. 背掛螺絲
及壁虎



e. 束線帶



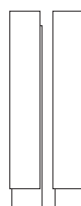
f. 固定座



g. 使用說明書/保證卡



h. 魔術帶




i. 電源轉接器



j. 濾網



安裝使用前請先閱讀p. 22說明。

機型：	OH-6800 X系列
顏色：	白
電源電壓：	DC 12V 
消耗功率：	4.5W(max)
外型尺寸：	189(長) x 125(寬) x 46(高) mm
淨重：	376g±10%
超氧離子輸出量：	150mg/hr
超氧離子保護裝置：	10分鐘自動斷電保護裝置

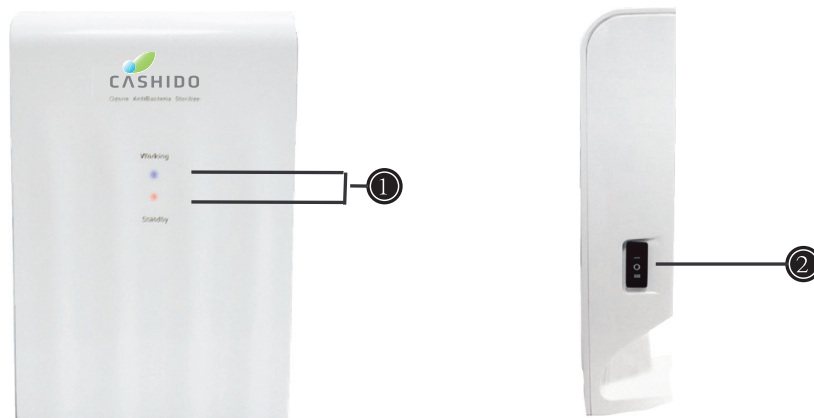
本機通過SGS臭氧溢散濃度測試報告，濃度規範標準請參考華仕德科技官方網站Q&A www.cashido.com.tw


■ 安裝與使用說明

一、安裝方式及程序

1. 檢查外觀是否有損傷，以確定貨品於運送途中有否發生碰撞之情形。
2. 檢查機型零件是否短少，包含之各項物件如下：
 - a. 10秒機
 - b. 轉換接頭 / 混合器 (XW2 適用)
 - c. 矽膠管 (XW2 適用)
 - d. 背掛螺絲及壁虎 (XW2 適用)
 - e. 束線帶
 - f. 固定座
 - g. 使用說明書/保證卡
 - h. 魔術帶
 - i. 電源轉接器
 - j. 濾網
3. 安裝方式請參閱下頁圖解安裝示意圖

二、認識各組件及使用說明



項目	說明
1. 狀態指示燈	紅色LED燈亮表示待機中 藍色LED燈亮表示運轉中
2. 電源開關鍵	開關及功能選擇  XW2 / XA2 型號適用 ○ 表關機 - 表超氧離子產出中

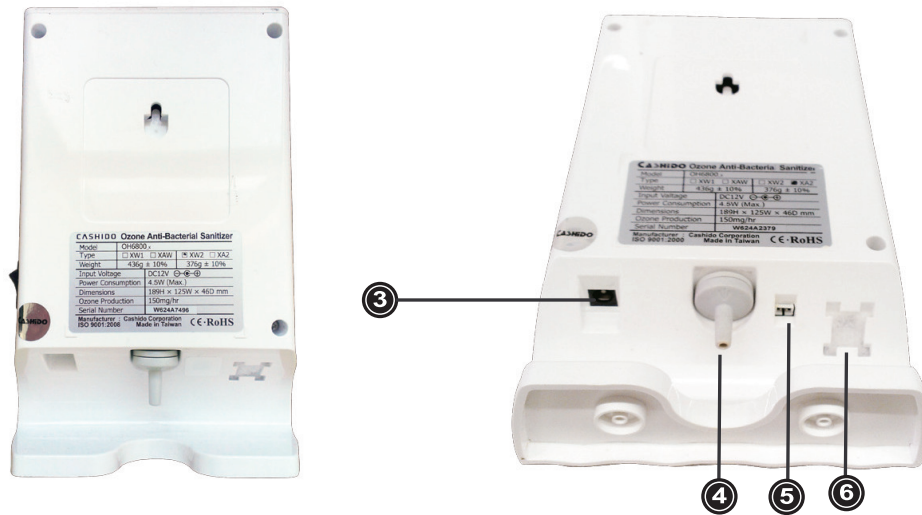
Ozonized Water

超氧離子殺菌裝置

使用手冊

科技/健康/環保/超氧離子殺菌裝置

三、認識各組件及使用說明



項目

說明

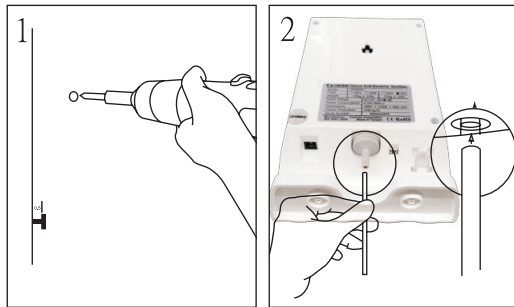
- | | |
|-------------------|------------|
| 3. DC 12V 電源插孔 | 插入DC12V電源線 |
| 4. 超氧離子輸出口 | 與矽膠管連接 |
| 5. LED燈插孔 (XA2適用) | 連接LED燈接線 |
| 6. 濾網 | 視需要更新濾網 |

四、本機保固期限壹年

五、注意事項：如有以下情形之一，不在保固範圍。

- 如係天災、外力破壞、改裝、人為損害等。
- 自行拆修者。
- 使用非原廠配件造成之損害。

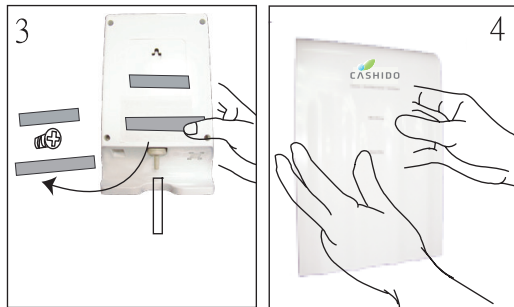
圖解安裝說明 - XW2 型號



- 1** 在牆上鑿一個孔釘入壁虎，鎖上背掛螺絲，預留0.5~1cm距離。
(若欲加貼魔術帶，需先擦淨欲黏著的瓷磚表面。)

注意：機器請掛於壁上時應高於水龍頭15公分以上。魔術帶只能黏貼於瓷磚或光滑表面。

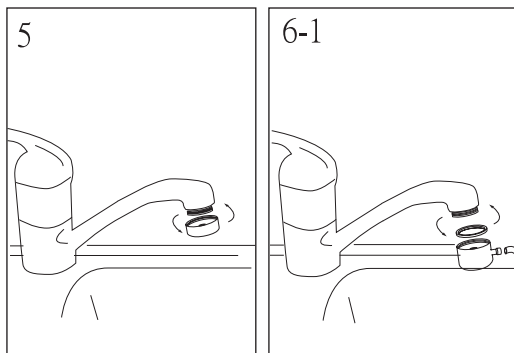
- 2** 將矽膠管依序接上機器下方之超氧離子出口。



- 3** 將機器取出掛上牆面。
(將魔術帶兩邊分別橫向黏貼於牆面及機器背面。)

- 4** 將機器取出掛上螺絲並放正。
(加貼魔術帶時，可將機器對正貼於牆面上。)

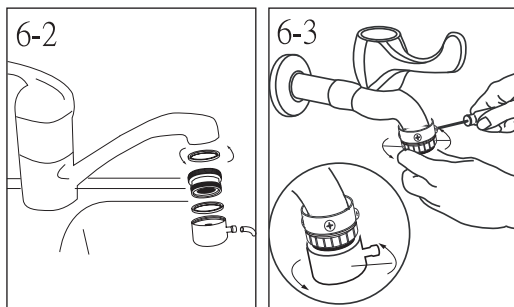
※如果不想使用所附之螺絲或魔術帶固定機器也可以將機器立在廚檯上靠近水龍頭處。



- 5** 若水龍頭已具有芽頭裝置，將水龍頭起波器反向拆除。

- 6-1** 若水龍頭是外螺紋，則直接將混合器鎖入，並插入矽膠管。

- 6-2** 若水龍頭是內螺紋，請先裝上轉接頭再將混合器鎖入，並插入矽膠管。



- 6-3** 若是傳統水龍頭，則需加裝無牙轉接頭。固定無牙轉接頭後，再將混合器向上旋緊即可。

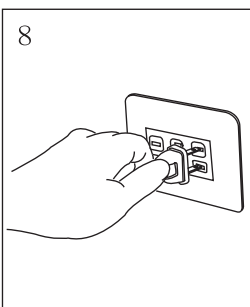
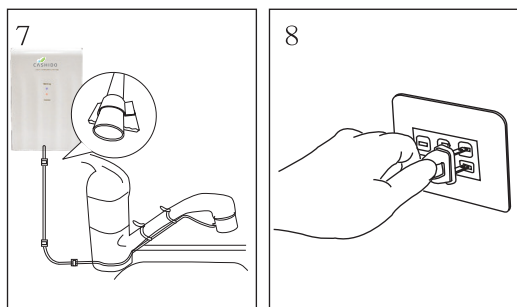
■注意：請使用適合之工具安裝混合器，以避免混合器凸出處斷裂。

Ozonized Water

超氧離子殺菌裝置

使用手冊

科技/健康/環保/超氧離子殺菌裝置

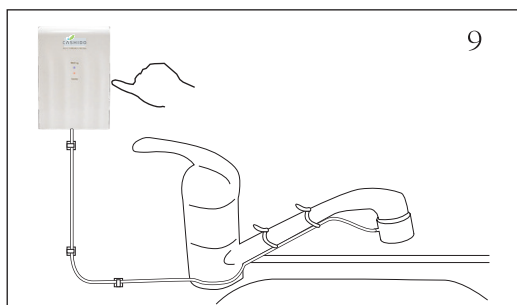


7 將矽膠管依序接於機器上之超氧離子出口與混合器出口。

使用束線帶固定矽膠管於水龍頭上以防止鬆脫或滑動。

另也可使用固定座將矽膠管固定於牆壁面，防止滑動。

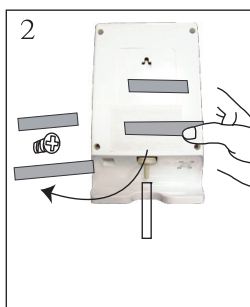
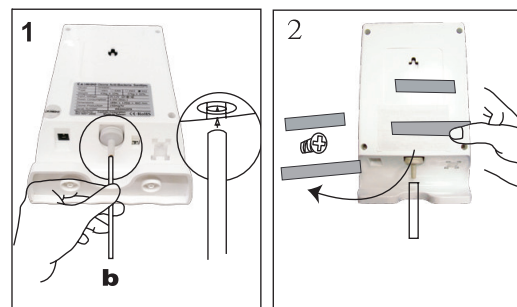
■ 注意:不可壓迫或擠壓到矽膠管



8 插上電源插頭，插頭另一端則接於主機背面電源孔。

9 按下機器側面之POWER開關，狀態指示紅燈運作正常時，即表示正確地完成安裝程序。

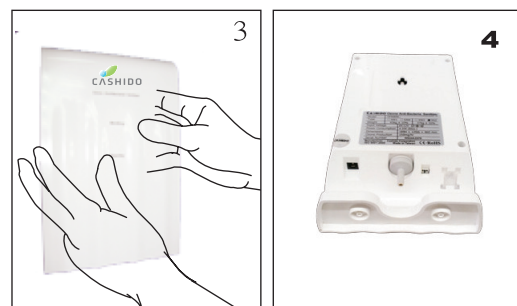
圖解安裝說明 - XA2 型號



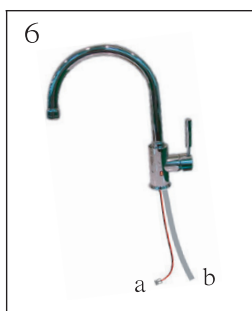
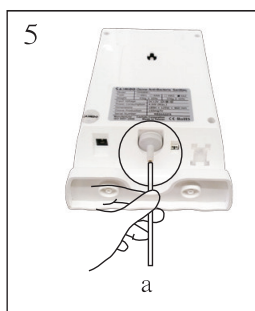
1 將矽膠管依序接上機器下方之超氧離子出口。

2 將機器掛於水槽下廚櫃內之牆面。
(可使用所附之魔術帶平行貼於機器背面及牆面之間,用於固定機器於牆面.)

3 將機器貼於牆面放正。
(加貼魔術帶時,可將機器對正貼於牆面上。)



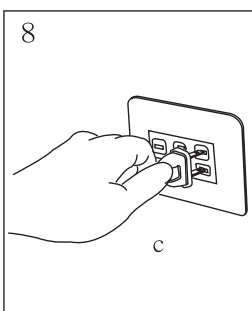
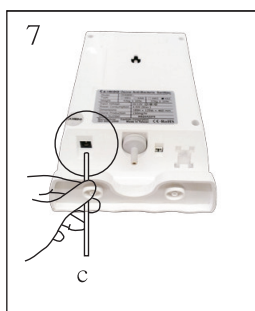
4 如果不想使用所附之螺絲或魔術帶固定機器也可以將機器立在廚檯上靠近水龍頭處。



5 將圖5 LED插孔a與圖6之a線連接

6-1 將圖1之矽膠管b與圖6之b管連接

6-2 水龍頭安裝使用方法請參考水龍頭安裝使用手冊。



7&8 將AC電源線插於c口並插上插頭。

9 打開機器側邊開關後，如果紅色指示燈運作正常，表示正確完成安裝程序。



Ozonized Water

超氧離子殺菌裝置

使用手冊

科技/健康/環保/超氧離子殺菌裝置

圖解操作說明 ~ 開機/待機/啓動/關機

XW2 / XA2 型號



開機 / 待機：

將機器側邊的電源開關按到"|"位置，當機器與水龍頭的紅色指示燈亮起，代表機器已處待機模式。

啓動：

打開水龍頭當水流出時，機器的藍色指示燈與水龍頭上的綠色燈亮，即表示機器已在運作，超氧離子正在產出。

關機：

將電源按到"O"位置，所有指示燈皆關閉後表示機器已關機。

自動斷電保護裝置

連續使用超過10分鐘後，會自動進入斷電保護裝置。

(此時機器之紅燈與水龍頭綠燈持續閃爍，表示自動斷電保護裝置啓動，機器已自動停機，若使用者需要繼續使用超氧離子水，請重新打開水龍頭。)

■ 使用上之注意事項

- 使用前請詳閱本注意事項，然後正確使用。
- 在此所示之注意事項，分為下圖所示兩種。
 - ⚠ 操作錯誤時，很可能會導致重傷事故。
 - ⚠ 操作錯誤時，很可能會引發人身傷害或財務損失。
- 因事關安全之相關重要內容，請務必遵守。
- 本文所用的圖形具有以下涵義。
 - ⊘ 絕對不可以！
 - ⓘ 請務必依指示操作。
 - ⊞ 必須拔下電源插頭。

警 告

- ⊘ 不得改造，且請勿自行拆開、修理。
- ⊘ 請勿用潮濕的手觸碰機台。
- ⊘ 請勿讓電線受損、加工、過度彎曲、扭轉、拉
- ⊘ 電源線上不得置放重物或夾到。
- ⊞ 保養時或移動時，請停止運轉，拔除插頭。
- ⊘ 當電線或插頭受損，插座鬆弛時請勿使用。
- ⊘ 請勿用於密閉、不通風的場所或過於潮濕的環境場所。
- ⊘ 本機主供洗滌用，非飲用水加上超氧離子殺菌裝置處理後，依然為非飲用水。

注 意

- ⊘ 請勿設置於陽光直射的場所。
- ⊘ 請勿設置於暖爐附近等高溫場所，本產品操作環境溫度為0~50 C。
- ⊘ 請勿讓本產品吸入可燃性物品(髮膠噴霧等)或帶有火源的香煙等。
- ⊘ 請勿堵住吸、出氣孔。
- ⊘ 請勿在主機附近，放置魚缸或花瓶等裝水器皿。
- ⊘ 請勿用稀釋劑、揮發油擦拭或噴灑殺蟲劑。
- ⊞ 長時間不使用時，請務必拔掉插頭。
- ⓘ 固定於牆壁上時請選擇堅固的牆壁或支柱，以免產品滑落而損害。

Ozonized Water

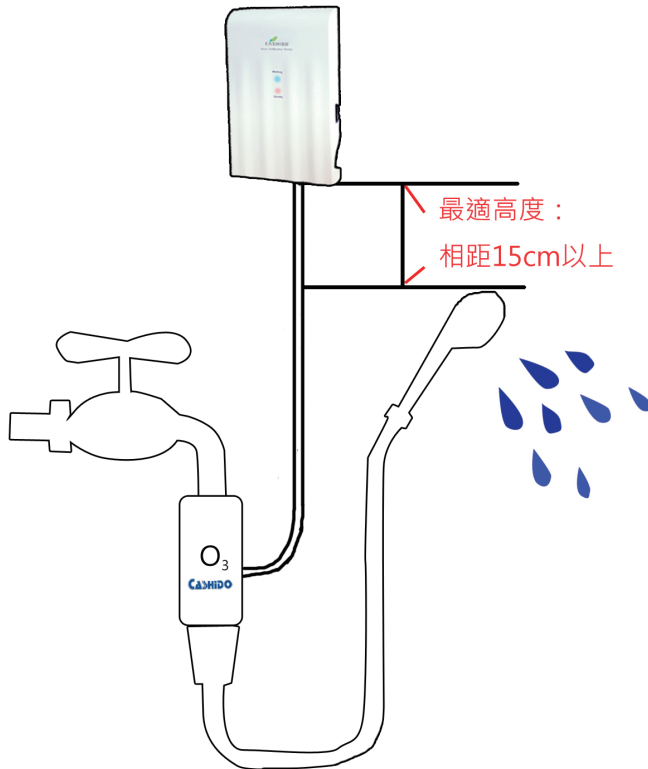
超氧離子殺菌裝置 使用手冊

科技/健康/環保/超氧離子殺菌裝置

■ 10秒機 摩氧浴淋浴系列安裝注意事項

感謝您使用本公司摩氧浴，為使您可以正確使用並享受的各種好處，請依照以下建議安裝及使用本產品：

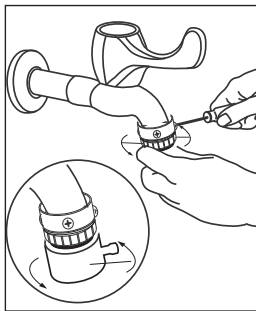
1. 本產品請安裝在通風良好處，若在浴室使用，請保持浴室或安裝地點通風良好。
2. 本產品可搭配專摩氧浴包使用，並注意：
 - 1) 機器安裝最適安裝高度應高於地面180cm以上，或儘量裝置在靠近天花板高度的位置。
 - 2) 機器高度需比蓮蓬頭高度為高，最適距離為機器比蓮蓬頭頂端高15cm以上。
 - 3) 蓮蓬頭水管請保持通暢狀態，切勿折到或擠壓，使水逆流進機器，易造成機器無法正常運作。
 - 4) 蓮蓬頭使用完畢後，請先將蓮蓬頭出水口朝下放置，再將水龍頭開關關上，等候數秒，待蓮蓬頭水管內殘水完全流出後，再將蓮蓬頭掛回原擺放處。
 - 5) 安裝方式請參考下圖：



3. 本產品外觀具有防水設計，請勿將其他物品覆蓋在產品本身，以免造成機器內部受潮，影響產品功能正常運作。

選配 配件之使用時機及安裝說明

1. 無牙轉接頭



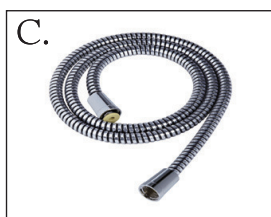
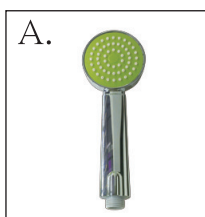
※使用時機：

若是傳統水龍頭時，則需加裝無牙轉接頭。

※安裝說明：

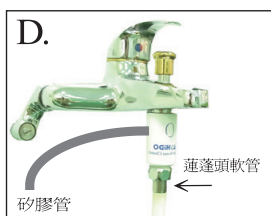
固定無牙轉接頭後，再將超氧離子混合器向上旋緊即可。

2. 蓮蓬頭(圖A.)及蓮蓬頭專用混合器(圖B.)



※使用時機：

在淋浴時，欲使用10秒機使淋浴水具有殺菌功能，則需要選購專用蓮蓬頭(如圖A.所示)及專用混合器(如圖B.所示)。



※安裝說明(如圖D.所示)：

固定蓮蓬頭專用混合器後，在專用混合器的下方旋上蓮蓬頭軟管，再接上矽膠管即可。

3. 分水器



※使用時機：

搭配濾水器共同使用時。

※安裝說明：

於水龍頭出水口將分水器固定後，將濾水器的出水軟管接在分水器的右方螺旋接頭即可。

※選配零件請洽經銷商購買※

Ozonized Water

超氧離子殺菌裝置

使用手冊

科技/健康/環保/超氧離子殺菌裝置

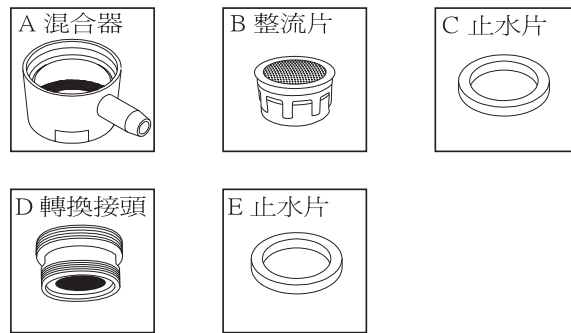
■ 維護與保養

1. 定期以拭布(勿使用任何溶劑)擦拭機器的表面，清潔出風口時，以拭布將附著的灰塵及異物清除即可。
2. 每年定期更換機器背面之濾網，或於濾網髒污、污損時做更換，以預防機器無法啟動且無法正常運作。

XW2 型號適用

- 混合器需每個月定期拆開清洗，去除雜質、污垢，以預防出水口堵塞逆流，導致矽膠管浸水損害機器。

- 拆開沖洗後，請依下列圖示 A-B-C-D-E 之順序逐一組裝



簡易問題排除

項目	發生狀況	故障種類(水龍頭開啓)	維修
1	混合頭安裝不當	接合處漏水、或水逆流、或無法釋放超氧離子	自行重新安裝
2	混合頭清洗，零件未完整組裝	接合處漏水、或水逆流、或無法釋放超氧離子	自行重新安裝
3	混合頭濾網組塞	出水量減少，嚴重時水會逆流	自行重新安裝
4	產品掉落水槽、泡水	無法開機、或開機後無動作	回廠檢修
5	空氣過份潮溼	內部偵測器容易氧化，靈敏度降低	回廠檢修
6	背景雜訊、噪音過大	有可能導至誤動作，或無法關閉產品	回廠檢修
7	其他行為	其他故障原因	回廠檢修

■ 超氧離子水

什麼是超氧離子？

超氧離子是經由本公司研發的精密離子產生器將空氣中氧離子分離出來，形成高氧化電位離子群；超氧離子為無毒、無色，具有新鮮青草氣味。

超氧離子特色

1. 超氧離子為無毒、無色，具有新鮮青草氣味。
2. 含有一切生態氧原子(O)，有極強的活潑性，其氧化力約為氯的3000倍。
3. 超氧離子超強的氧化力，對細菌、黴菌或有毒物質及臭味，能立即產生氧化反應，可有效達到除臭、殺菌、解毒及漂白、保鮮等功能。
4. 超氧離子滅菌的方法，是破壞其細胞膜，將其分解氧化，達到抑制的效果。
5. 使用超氧離子水清洗食材時，對食材之天然成分不會傷害，僅氧化去除附著於表面的化學物質。

超氧離子功能

殺菌、解毒、除臭、除味、漂白、保鮮、增氧…等。

■ 超氧離子殺菌裝置功能

1. 消滅細菌，可瞬間有效清除細菌及病菌。(大腸桿菌、金黃色、葡萄球菌、沙門氏桿菌…等等)。
2. 蔬果解毒(迅速斷鏈分解蔬果殘餘農藥，有毒農藥、重金屬、肥料，氧化成爲二氧化碳、水、及無害安定物質)。
3. 水質處理(減少氯消毒的副產物三鹵甲烷 THMs)。氧化無機溶解物質，如鐵、錳…等。氧化有機微污染物，如水的味道。
4. 去除異味(海鮮類，黴菌類異味之脫臭)。
5. 魚肉保鮮(延長保鮮期，消滅附著於生鮮食材表面的細菌、降低食物腐敗)。
6. 氧化漂白(超強氧化力，可當漂白劑用來洗滌衣物，清除地毯，家俱黴菌)。
7. 超氧離子沐浴(身體各部位穴道吸收超氧離子後可消除壓力，促進新陳代謝而消除疲勞、增強體力，如沐森林浴能有更多靈感。)
8. 洗臉美顏(可治青春痘，清除皮膚角質層，分解污垢，增進皮膚之新陳代謝)。
9. 用於漱口，可預防牙周病。
10. 餐具、廚具之器皿消毒殺菌。
11. 生理衛生(除異味，尤其生理期間，可避免細菌滋生)。
12. 保健(口腔衛生，防止蛀牙，除腳臭，減輕香港腳症狀)。

Ozonized Water

超氧離子殺菌裝置

使用手冊

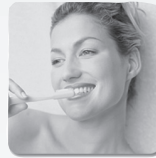
科技/健康/環保/超氧離子殺菌裝置

■ 超氧離子殺菌裝置適用場所

住家、浴廁、辦公室、美容院、餐廳、咖啡館、速食店、醫院、診所、學校、補習班、托兒所、汽車旅館、百貨公司、飯店、超級市場、遊樂場、冷藏庫、KTV、健身房、購物中心、公共廁所、寵物店…等等，各種公共營業場所皆適用。

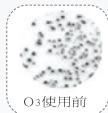
■ 超氧離子水的多功能應用及效益

1. 醫院、安老院、家庭衛生
 - 效益：病房衣物器具殺菌、牙科病人漱口水、預防醫療器材二次感染。
2. 健康、美容、護膚、三溫暖
 - 效益：美容、漂白、防止皮膚老化、促進新陳代謝。
3. 農產、水產、養殖
 - 效益：游水活魚蝦貝養殖、貯藏、加工、育成種子、生鮮魚蝦貝洗淨。
4. 生鮮食品、家庭蔬果
 - 效益：魚貝類牡蠣、生魚片、蔬果洗淨、冷凍食品洗滌、去腥臭保持新鮮、去除表面殘餘農藥、防止異味發生。
5. 游泳池、自來水廠、淨水
 - 效益：脫臭、殺菌、淨化。
6. 餐廳、速食店、咖啡館營業場所清潔
 - 效益：砧板、地面、鍋碗、瓢盤、網籃及賣場桌椅等廁所洗手及清理、淨化。維持沒有臭味蚊蠅不生的良好衛生環境。



■ 超氧離子使用瞬間殺菌試驗

- 瞬間消滅大腸桿菌，效果高達99.99%（食品工業發展研究所檢測）

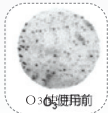


O₃使用前



O₃使用後

- 瞬間消滅金黃色葡萄球菌，效果高達99.99%（食品工業發展研究所檢測）



O₃使用前



O₃使用後

- 瞬間消滅沙門氏桿菌，效果高達99.99%（食品工業發展研究所檢測）
- 瞬間消滅克氏肺炎桿菌，效果高達99.99%（食品工業發展研究所檢測）
- 瞬間消滅綠膿桿菌，效果高達99.99%（食品工業發展研究所檢測）

■ 超氧離子水在生活中之應用

生活應用	效益
洗手消毒	滅菌，可快速洗淨細菌、病毒
蔬菜，水果之清洗及去除殘餘農藥	分解表層殘留農藥、寄生蟲卵，殺菌並可保持蔬果鮮度，使其更加清脆爽口
家庭用水淨化處理	殺菌、脫臭、去色，可減少水中的有機鹵化物
鍋、碗、瓢、盆、奶瓶及各類器皿消毒處理	消毒，去除殘留之清潔劑，不造成環境二次污染
衣物，毛巾，抹布，臭襪子之清洗	以超氧離子水清洗，能將衣物纖維中污垢、細菌去除，還有漂白、除臭之效果 (註：超氧離子具有強效之漂白力，會使衣物褪色，故只適用於素色之衣物。)
清洗生鮮肉類、海鮮 清洗地板、浴廁	殺菌，延長保鮮期
口腔清潔	消毒、殺菌
洗臉	殺菌、消毒、除口臭，牙痛者可幫助消炎，緩和疼痛美白 去角質、深層清潔、活化細胞並促進新陳代謝 (對青春痘可殺菌、消炎)
洗腳、泡腳、改善香港腳	殺黴菌，頑癬，除腳臭，抑制香港腳
個人清潔，衛生	利用超氧離子之殺菌原理，取代清潔衛生藥用液，除異味 (尤其生理期間，可避免細菌孳生)
泡澡SPA	超氧離子SPA，提高攝氧量，促進新陳代謝

請至華仕德科技官方網站查詢更多訊息

www.cashido.com.tw



